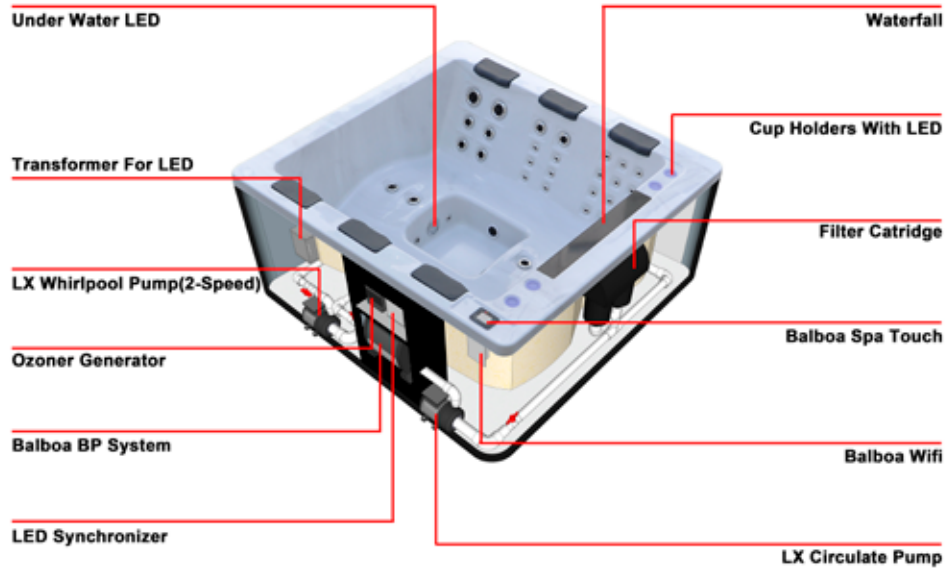
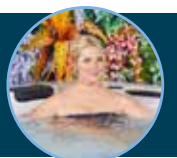


Vue technique



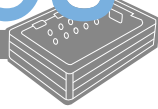
- | | | | | | |
|--|---------------------------|--|-------------------------|--|---------|
| | Air Valve | | Air Jet | | KJ-2.5 |
| | Outlet for circulate pump | | KJ-50# | | KJ-4.5R |
| | Big LED | | KJ-3.5 | | |
| | Ozoner mixer | | KJ-3.5R | | |
| | Drain | | KJ-5 | | |
| | Suction | | KJ-5R | | |
| | Diverter Valve | | Waterfall-control Valve | | |
| | Topside Panel | | Fountain | | |
| | Pillow | | Cup Holder | | |
| | Filter Cartridge | | Waterfall | | |



be spa®

FRANCE

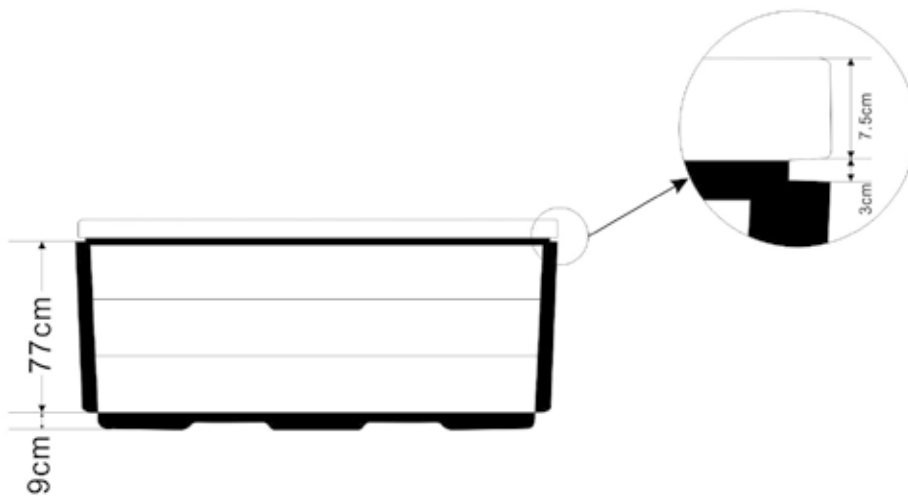
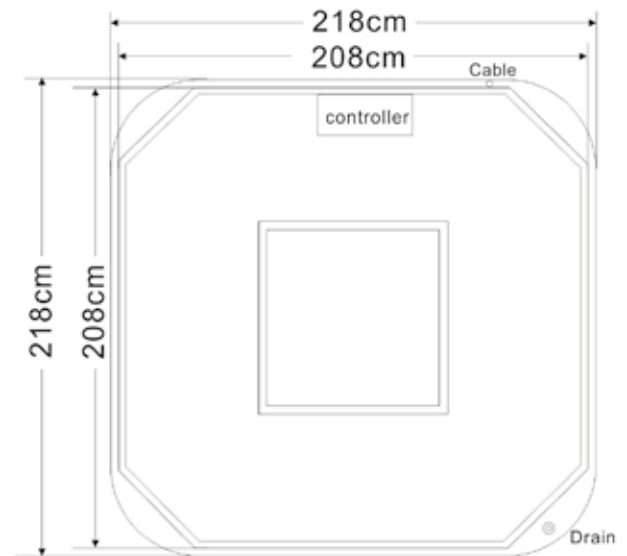
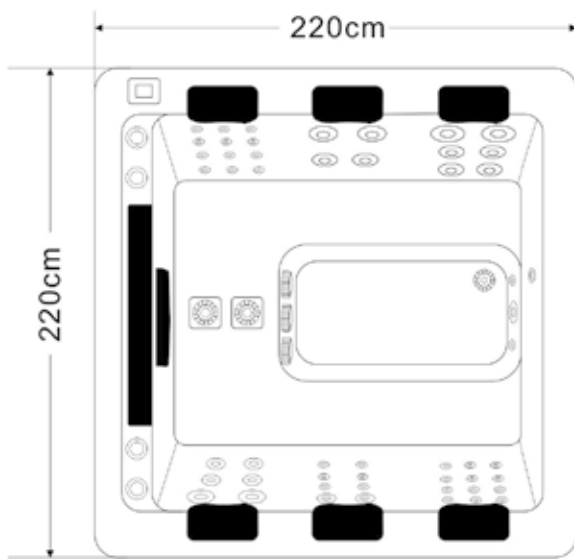
Créateur de bien-être



Gamme contemporaine

Agrad

Vue technique



BE SPA FRANCE au capital de 1 020 410 € - Filiale de BCF FINANCE au capital de 3 850 119 €
ZA Les portes de l'Océane Ouest - 72650 SAINT SATURNIN - FRANCE
Tél. +33 (0)2 43 24 09 90 - info@be-spa.fr - WWW.BE-SPA.FR

MARQUE FRANÇAISE

Sophie Favier
Ambassadrice
BE SPA

